

Health

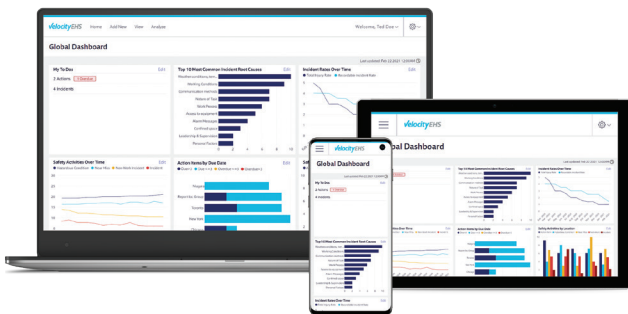
# Healthy Bottom Lines Require Healthy Frontlines



If you're responsible for Industrial Hygiene (IH) or Office Ergonomics, then you know how hard it is, especially for organizations that care, to protect employees from workplace stressors.

That's because when you rely on paper, spreadsheets or obsolete software, the more you try to do, the more strain you put on your people and systems.

**VelocityEHS Health Solution** gives you an easy and intuitive way to implement and manage a best-in-class IH program. With software built by certified experts for IH, everyone on your team can deliver expert results.



## Core Capabilities

- Chemical & OEL Database
- IH Sample & Equipment Management
- Similar Exposure Groups
- Medical Surveillance
- Lab & Consultant Interface
- Automated Chain-of-Custody Forms
- Quantitative & Qualitative Exposure Assessments

*"If you're going to go with IH software, this is the one...It's just perfect, I think."*

*Carole Newman - Owner, of HIH Laboratory*

## Best-in-Class Health Software:

**Do you tire of fighting with spreadsheets and looking for data scattered across disjointed systems just to complete basic tasks?**

**Unlock the power of your data by simplifying its collection and making it the engine that drives your IH programs.**

- Centralize information & stakeholder activity in a single system
- Ease data entry via pre-built templates & auto-populated fields
- Access full chemical and OEL database managed by VelocityEHS
- Consult list of stressors, laboratory sampling & analytical guides

**Are you and your people expected to run complex IH programs that are beyond your training or outside your comfort zones?**

**Elevate your team's IH IQ with software that guides users through best-practices based on established AIHA principles.**

- Launch & deliver large scale online office ergonomics process
- Auto-assign personnel to Similar Exposure Groups (SEGs)
- Manage sampling plans & medical surveillance programs
- Track SEGs & flag for qualitative exposure assessments (QEAs)

**Is too much of your time spent fighting fires and pulling together reports that you're pretty sure no one is reviewing?**

**Bring your stakeholders together in a unified system that drives engagement and insights through data transparency.**

- Grant labs & consultants secure access to upload data directly
- Perform in-depth statistical analysis of sample data
- Show value of IH to c-suite with real-time reports & risk matrices
- Document decisions & take control of chain-of-custody forms

**Call Us Today**

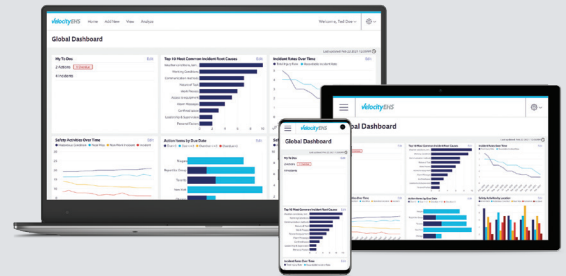
Toll Free: 1.866.919.7922

Or visit us online at: [www.EHS.com](http://www.EHS.com)



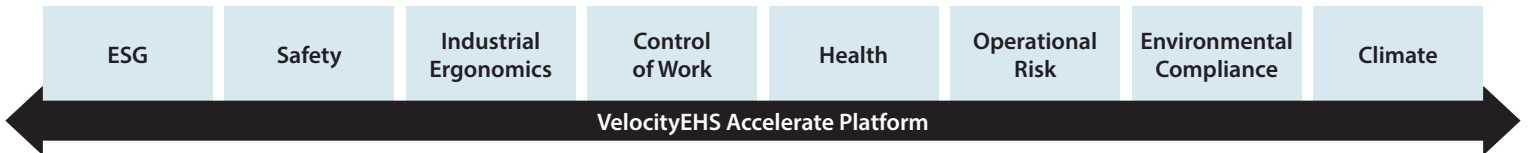
# The Accelerate Platform is EHS & ESG Done Right®

The **VelocityEHS Accelerate® Platform** delivers best-in-class performance to help you achieve operational excellence. Find out how easy your job can be when you're backed by a team of certified experts passionate about your success.



## What Problems Can We Help You Solve Next?

Our world-class solutions will help your team to elevate performance and deliver exceptional outcomes.

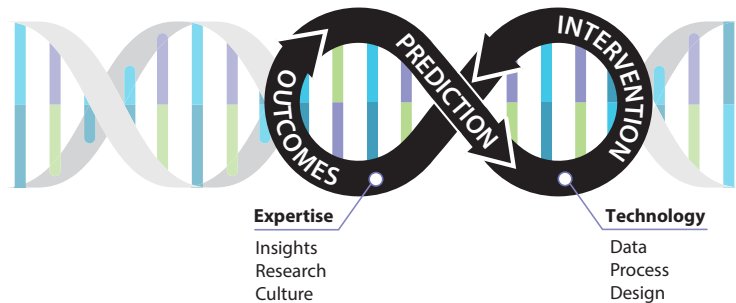


**Empower your team to remove roadblocks & turn obstacles into opportunities.**

- ✓ **Quick:** Implement with ease
- ✓ **Fast ROI:** Accelerated time-to-value
- ✓ **Effortless:** Easy to update & upgrade
- ✓ **Insightful:** Business Intelligence & reporting
- ✓ **Simple:** All actions & tasks in one place
- ✓ **Mobile:** Highest mobile adoption
- ✓ **Helpful:** Built-in guides & training
- ✓ **Informative:** Auto alerts, emails & texts
- ✓ **Attentive:** Committed customer support
- ✓ **Friendly:** 3rd party integration ready
- ✓ **Multilingual:** 20+ languages
- ✓ **Secure:** GDPR & SOC 2 Compliant

## ActiveEHS®

VelocityEHS combines expertise & technology to foster a cycle of prediction, intervention & outcomes called ActiveEHS®.



<b>10m+</b> Users world-wide	<b>140+</b> Countries & 6 continents
<b>1/3</b> Global Fortune 1000	<b>97%</b> Customer Loyalty

## The World's Most Trusted Companies Trust VelocityEHS

